



# Meridian Solar Farm

EN010169

Volume 6

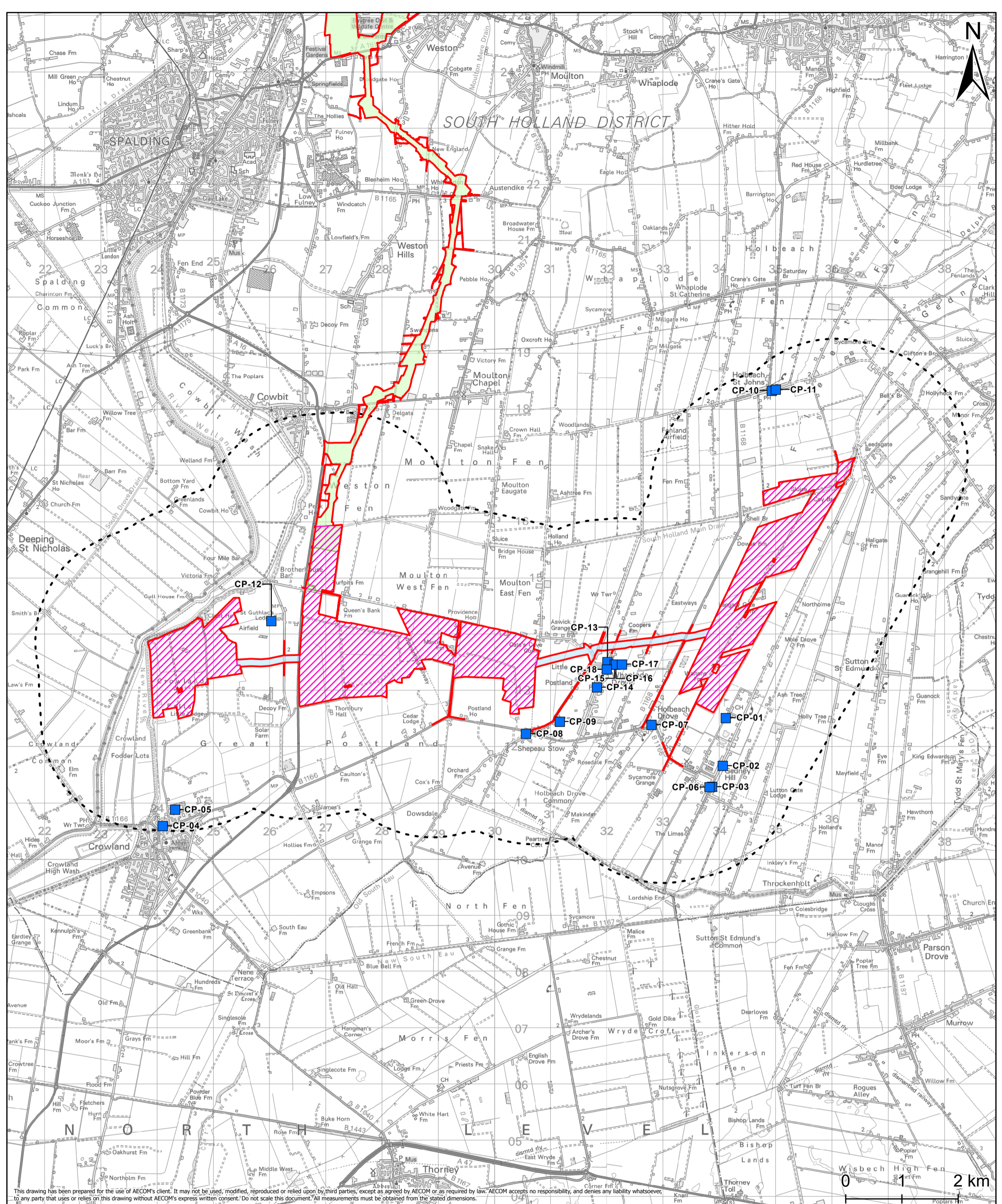
Environmental Statement

6.2 ES Figure 14-3:  
Community Land and Assets  
in the Vicinity of Solar  
Development Areas and  
Inter-Array Connections

APFP Regulation 5(2)(a)

Infrastructure Planning (Applications:  
Prescribed Forms and Procedure)  
Regulations 2009

March 2026



This drawing has been prepared for the use of AECOM's client. It may not be used, modified, reproduced or relied upon by third parties, except as agreed by AECOM or as required by law. AECOM accepts no responsibility, and denies any liability whatsoever, to any party that uses or relies on this drawing without AECOM's express written consent. Do not scale this document. All measurements must be obtained from the stated dimensions.

**Project Title**  
Meridian Solar Farm

**Map Title**  
Environmental Statement  
Figure 14-3: Community Land and Assets near the Solar Development and Inter-Array Connections

- Legend**
- Order Limits
  - Solar Development Areas
  - Inter-Array Connections
  - Grid Connection Route
  - Solar Development Area & Inter-Array Connection - 2km Buffer
  - Community Receptor

**Date:** 20/03/2026

**Copyright**  
Contains OS data © Crown Copyright and database right 2026  
Contains data from OS Zoomstack. Reproduced from Ordnance Survey digital map data © Crown copyright 2025. All rights reserved. Licence number AC000808122. © Local Government Information House Limited copyright and database rights 2025 AC000808122.

Scale	Version	Drawn	Reviewed
1:60,000	0	LL	AK

